

# Service Schematics

## NOKIA X2-00

RM-618

### IMPORTANT

This document is intended for use by authorized Nokia service centers only. Please use the document together with other documents such as the Service Manual and Service Bulletins.

### Version information

While every effort has been made to ensure that the document is accurate, some errors may exist. Please always check for the latest published version for this document.

If you find any errors in the document please send email to: [service.manuals@nokia.com](mailto:service.manuals@nokia.com)

#### Version history

- 1.0 First approved version
- 2.0 Z3300, J3521, J3522 added
- 3.0 R2834 value corrected

This material, including documentation and any related computer programs is protected by copyright, controlled by Nokia. All rights are reserved. Copying, including reproducing, modifying, storing, adapting or translating any or all of this material requires the prior written consent of Nokia. This material also contains company confidential information, which may not be disclosed to others without the prior written consent of Nokia.



### Measurements

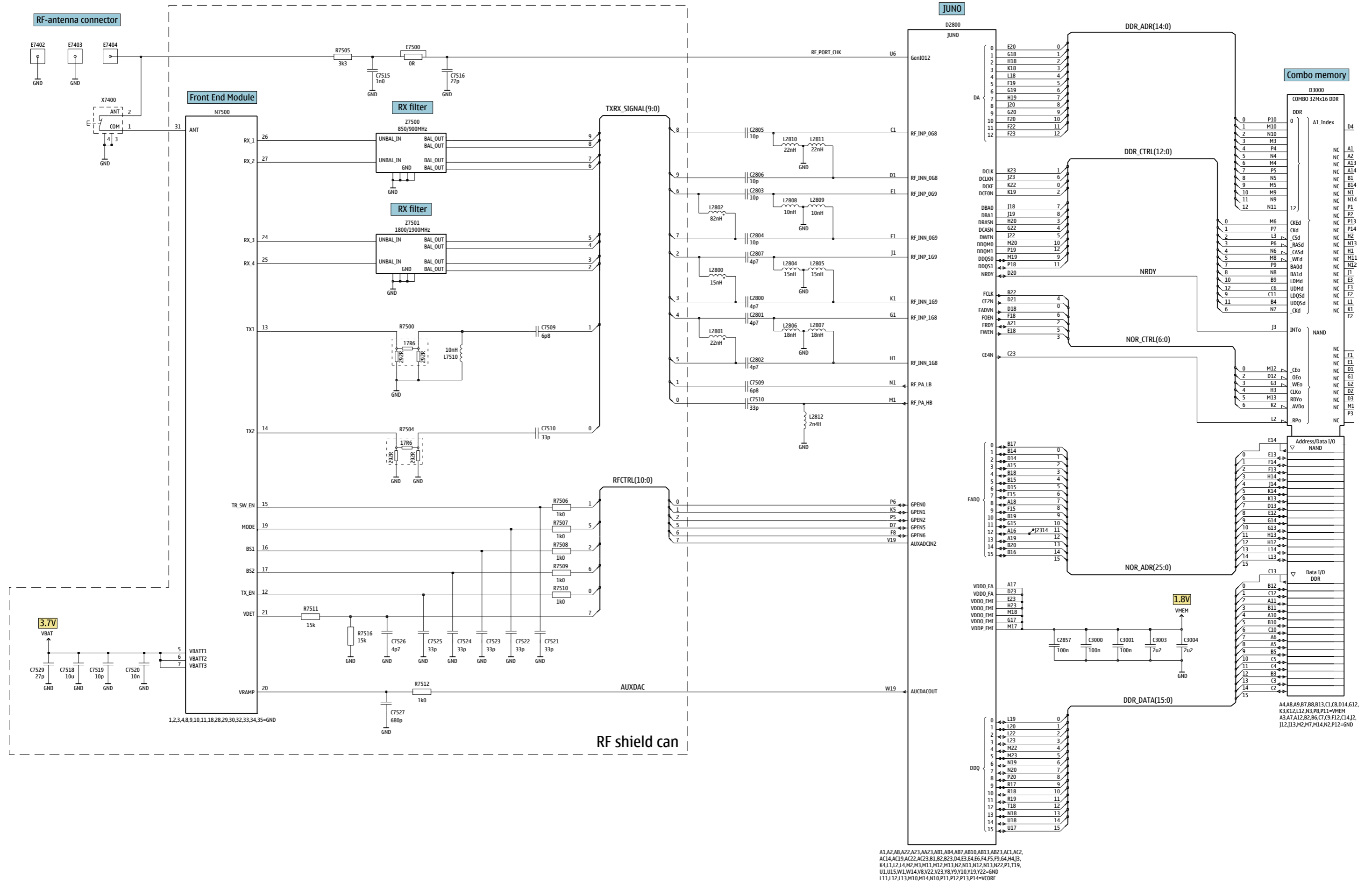
All measurements were made using the following equipment:

Nokia repair SW : Phoenix 2009.34.014.40684  
Oscilloscope : PicoScope 3206  
Spectrum Analyzer : Advantest R3162  
Multimeter : Fluke 175

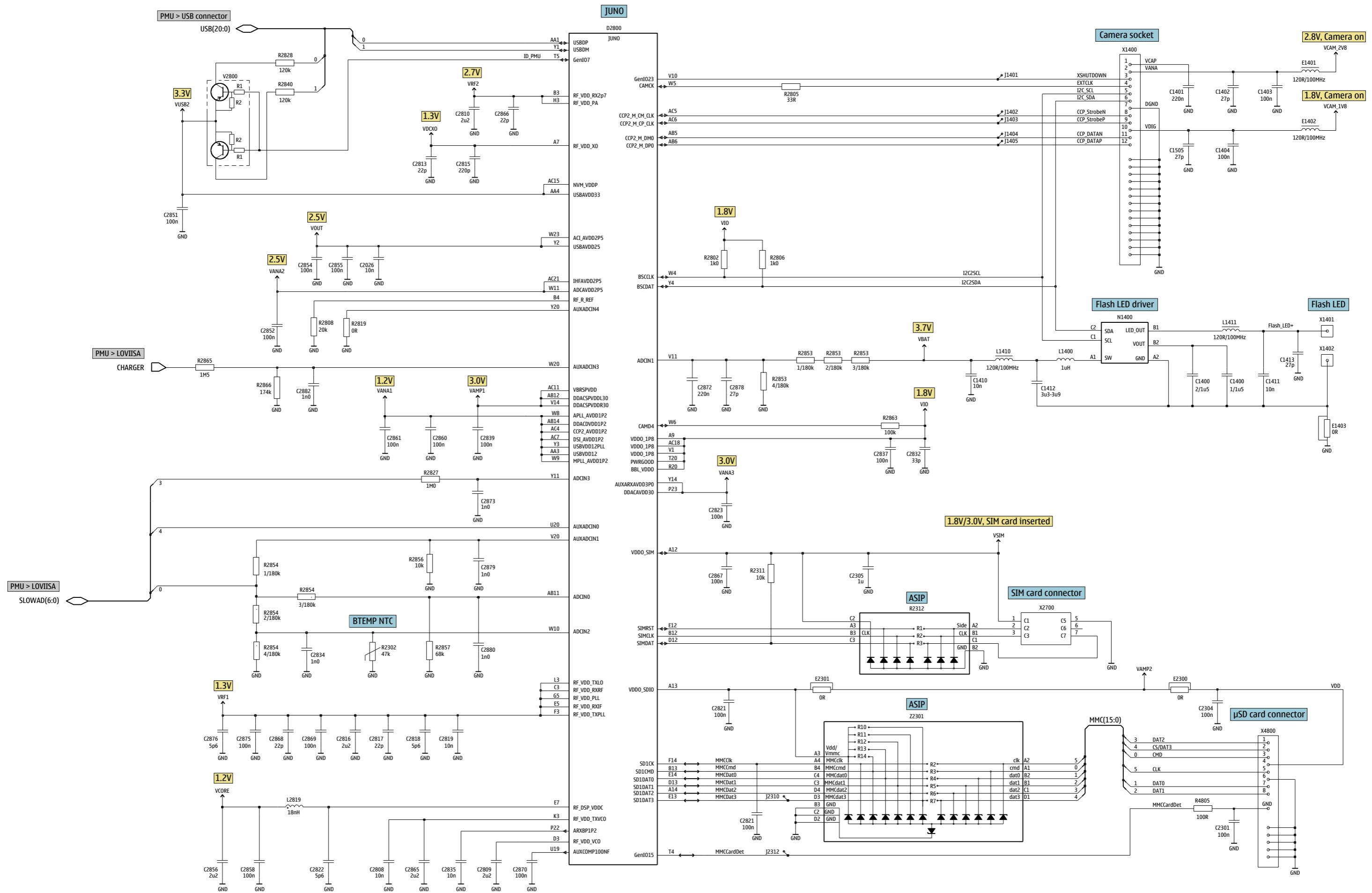
The measurement points in the schematics are linked to the oscillograms on the signal overview page. The links cycle between the measurement point in the schematics, the oscillogram and the measurement point in the component finder.

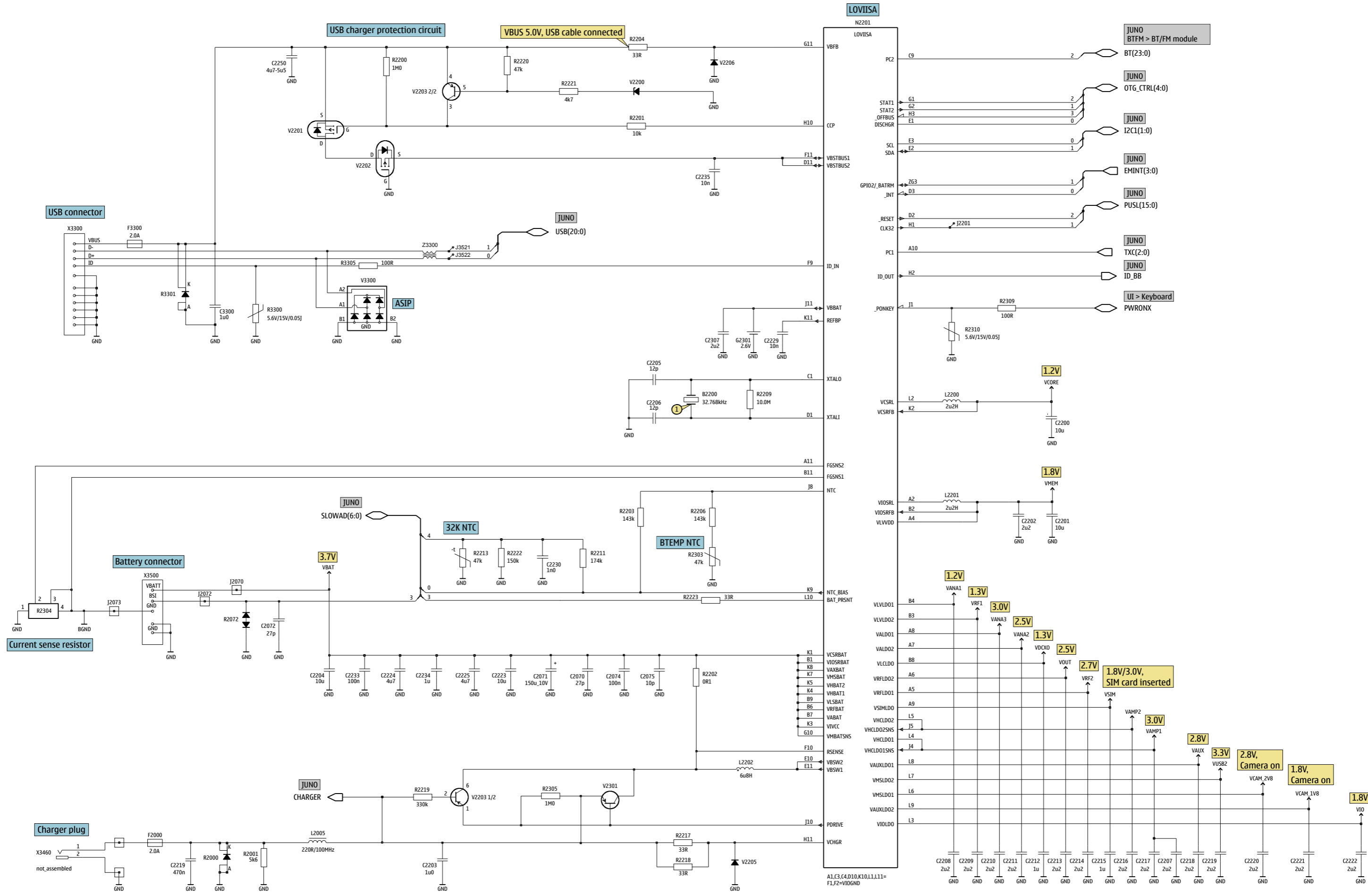
### Table of Contents

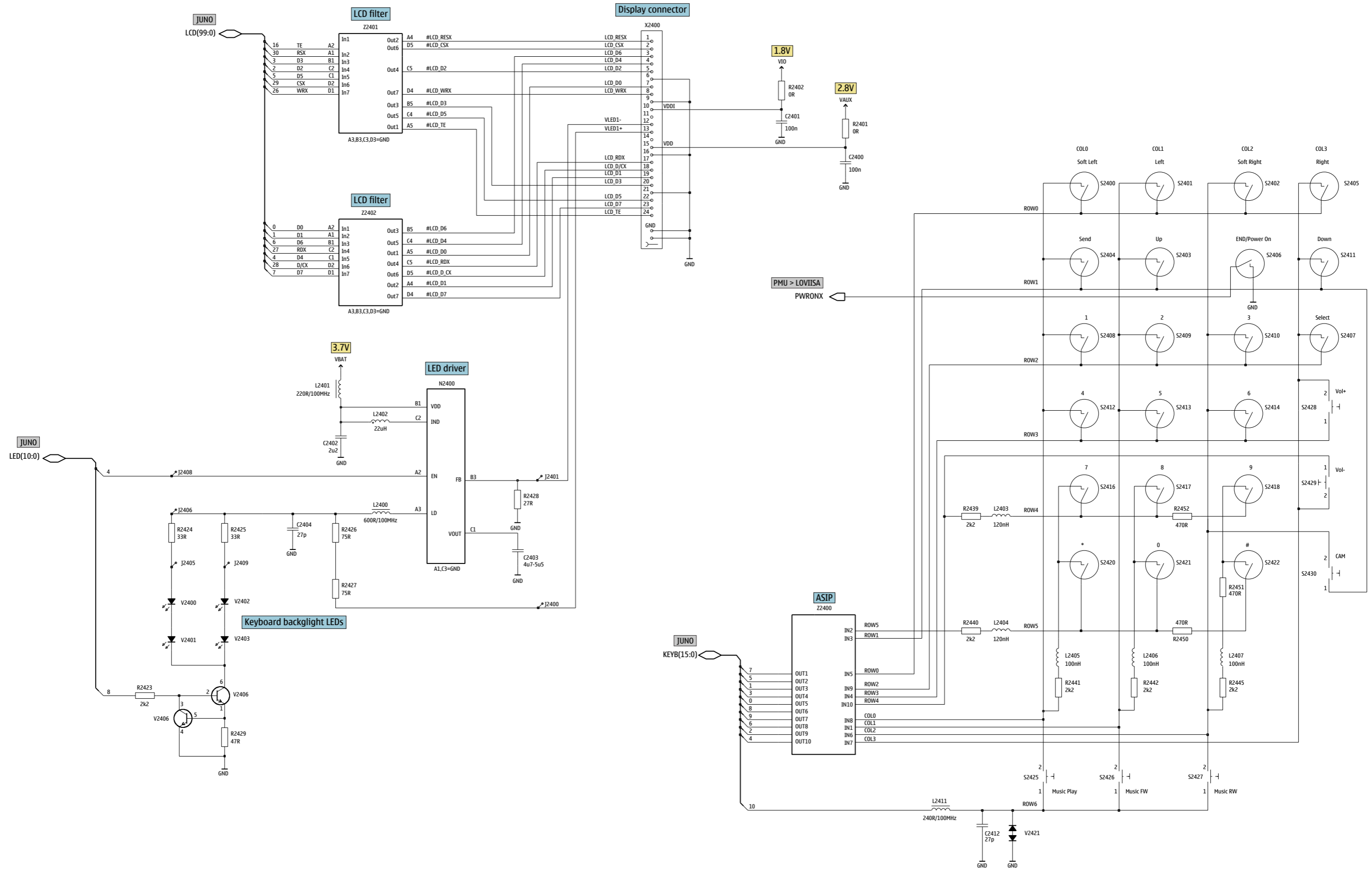
Front page	1
JUNO, RF part, Memory	2
JUNO, Audio	3
JUNO, Camera, MMC, SIM, Battery	4
PMU, Charging, HS USB	5
UI interface, Keyboard backlighting	6
BTFM	7
Signal overview	8
Component finder	9

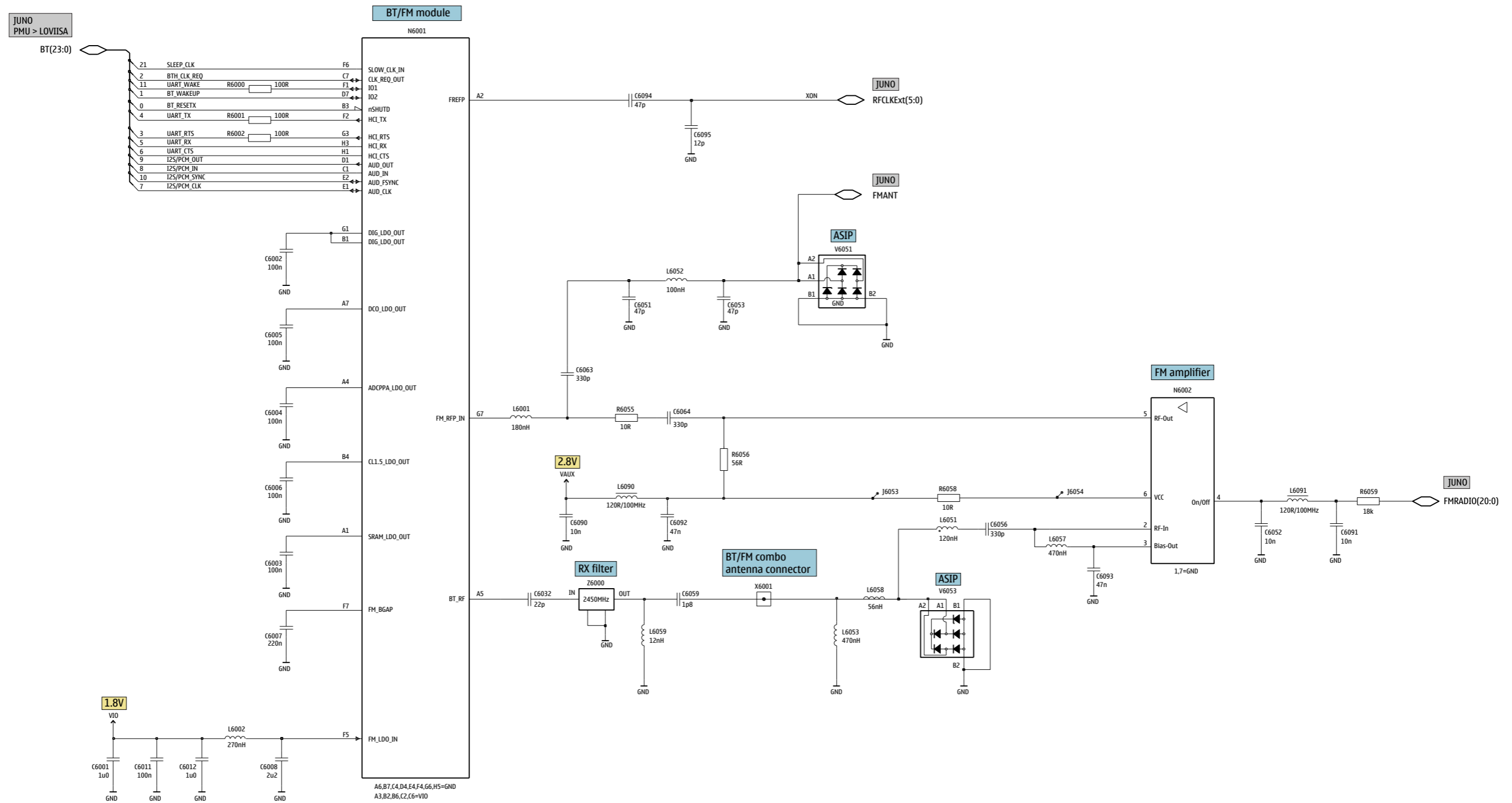






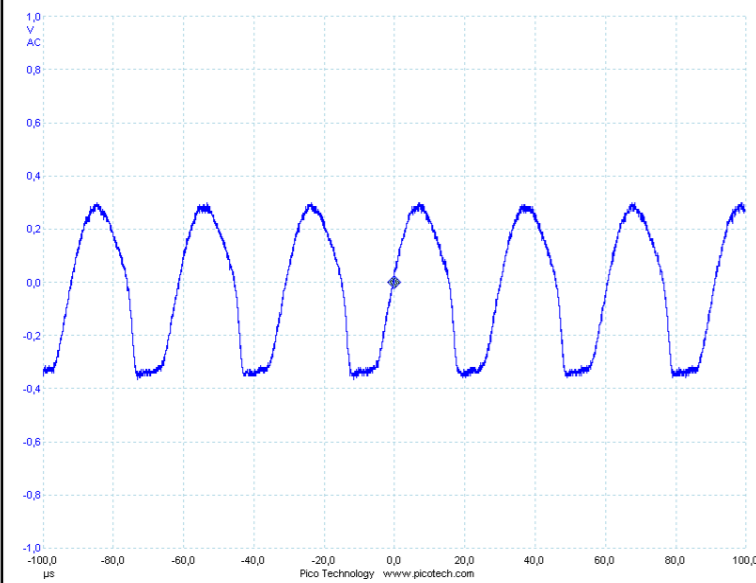






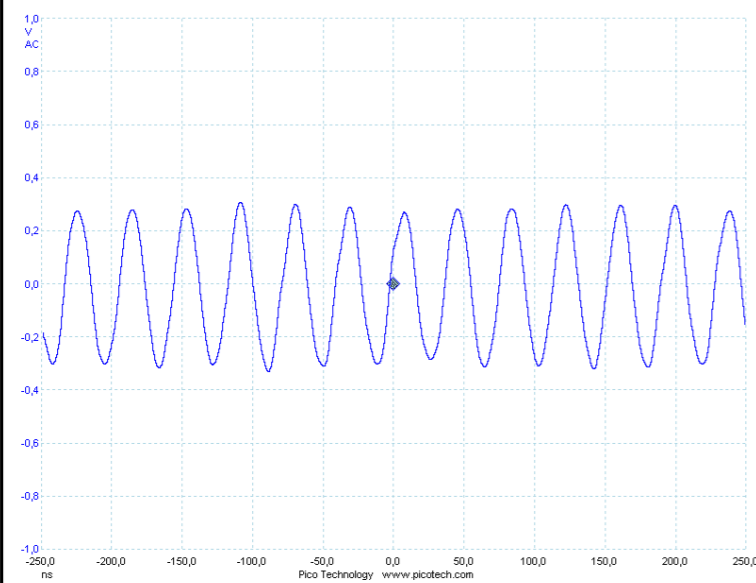


1) Sleep clock at B2200



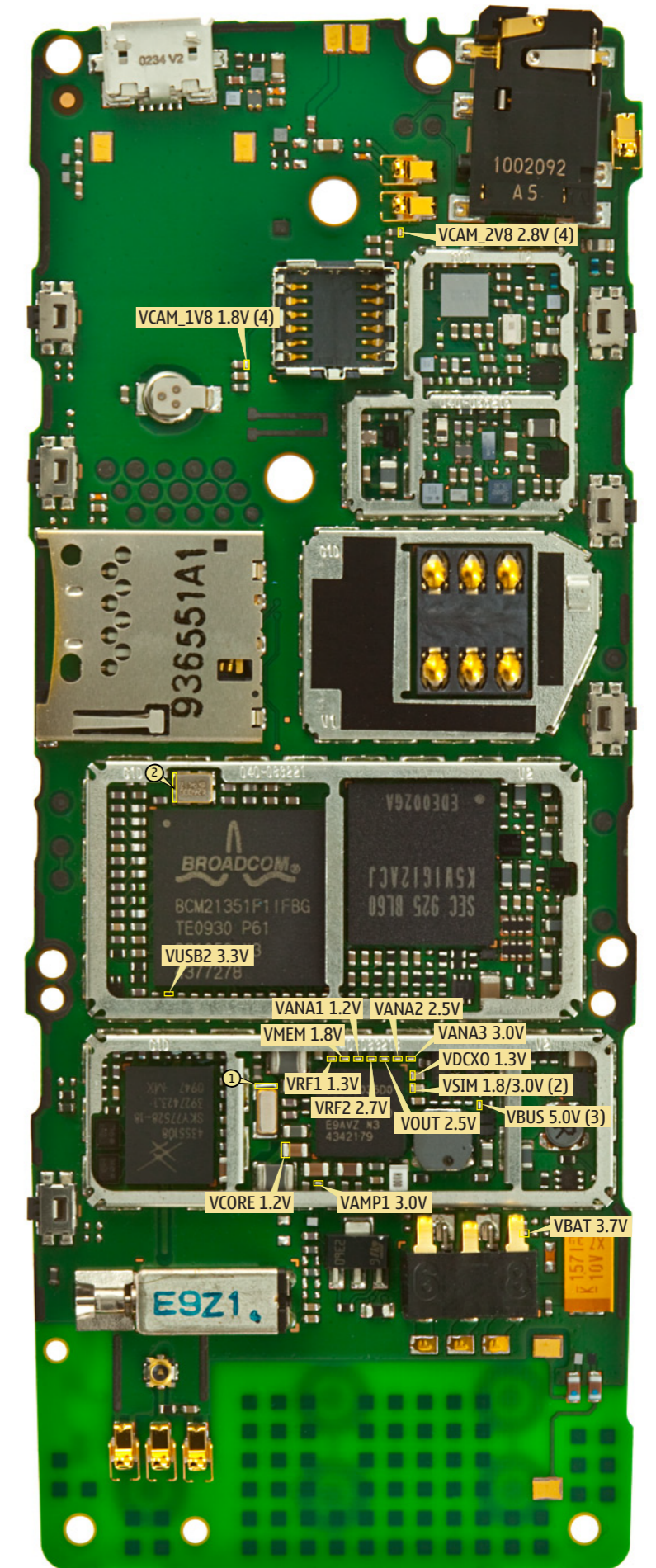
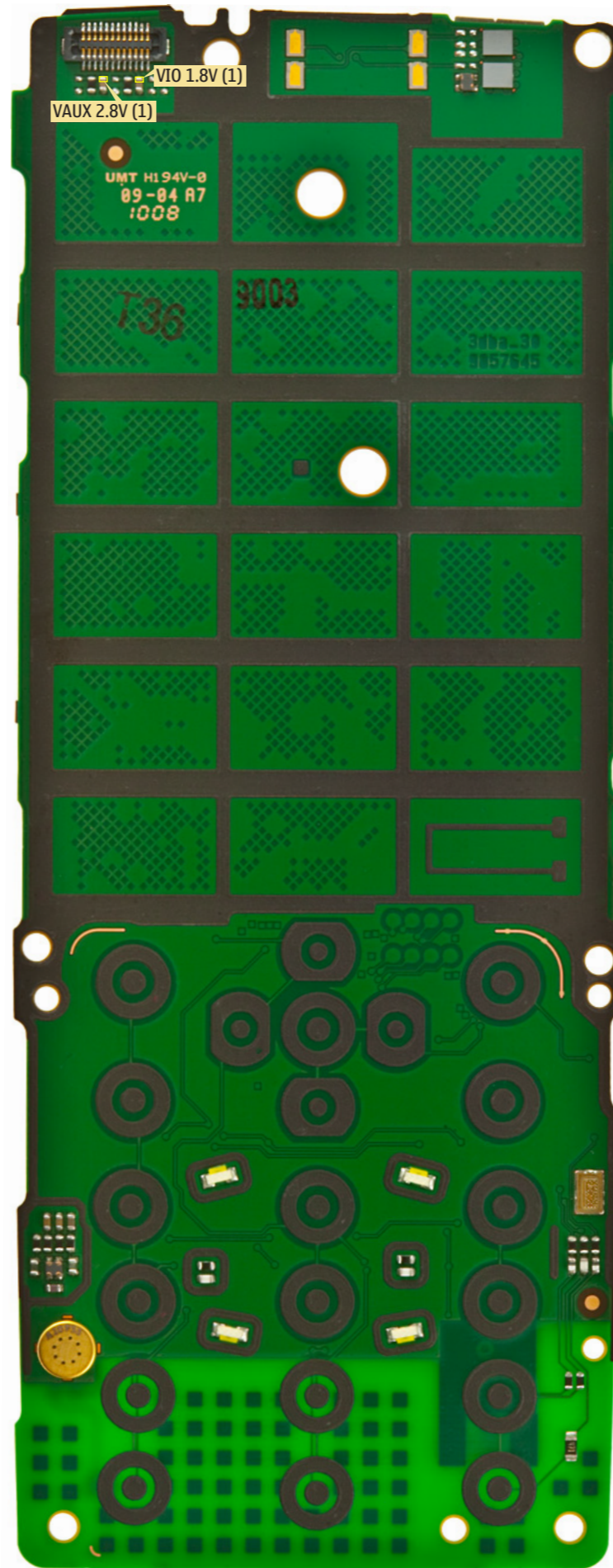
Average 32.768 kHz  
20µs/div 200mV/div Probe 10x

2) RF clock at B2800



Average 26 MHz  
50ns/div 200mV/div Probe 10x

- (1) - Display needs to be removed.
- (2) - SIM card connected.
- (3) - USB cable connected.
- (4) - Camera on.





<b>B</b>	C2190	Q2	C2494	R8	C2871	N4	C7521	P7	L2405	R4	R2001	C6	R2445	R9	R7510	O7	
B2175	B6	C2200	P6	C2495	Q8	C2872	N7	C7522	O8	L2406	R6	R2004	G4	R2450	U9	R7511	P8
B2100	S2	C2201	P6	C2800	M8	C2873	N7	C7523	O8	L2407	R9	R2013	G3	R2451	T9	R7512	P8
B2101	T3	C2202	O5	C2801	M8	C2875	N8	C7524	O8	L2411	H5	R2016	F3	R2452	T9	R7516	N8
B2102	D7	C2203	N3	C2802	M8	C2876	N8	C7525	O7	L2800	M8	R2072	Q5	R2802	K5	<b>S</b>	
B2200	P6	C2204	Q5	C2803	L8	C2878	M3	C7526	M8	L2801	M8	R2100	R2	R2804	K3	S2425	H1
B2800	K7	C2205	P6	C2804	L8	C2879	N4	C7527	P8	L2802	L8	R2101	R1	R2805	N7	S2426	K1
<b>C</b>	C2206	P6	C2805	L8	C2880	N6	C7529	P7	L2803	L8	R2102	S2	R2806	K4	S2427	E1	
C1400	G5	C2207	O6	C2806	L8	C2881	N5	<b>D</b>	L2804	M8	R2103	S2	R2807	K3	S2428	E9	
C1401	D4	C2208	O5	C2807	M8	C2882	M2	D2800	M6	L2805	M8	R2104	R5	R2808	K7	S2429	G9
C1402	D5	C2209	O5	C2808	M8	C2883	L2	D3000	M4	L2806	L8	R2105	R5	R2813	K4	S2430	O9
C1403	D5	C2210	O4	C2809	K8	C2884	L2	<b>E</b>	L2807	M8	R2106	A7	R2814	K4	<b>V</b>		
C1404	F6	C2211	O4	C2810	L8	C2885	L2	E1401	D4	L2808	L8	R2107	B7	R2816	N4	V2200	N3
C1410	H4	C2212	O4	C2813	L7	C2886	M2	E1402	F6	L2809	L8	R2110	R2	R2817	N4	V2201	O3
C1411	F5	C2213	O4	C2815	K7	C2888	N2	E2100	A6	L2810	L8	R2111	R2	R2818	N4	V2202	O4
C1412	G5	C2214	O5	C2816	K7	C3000	L5	E2101	B6	L2811	L8	R2112	R1	R2819	N4	V2203	N3
C1413	C5	C2215	P4	C2817	K8	C3001	K3	E2102	B5	L2812	M8	R2113	R1	R2824	N4	V2205	P3
C1505	F6	C2216	Q5	C2818	L8	C3003	K4	E2103	A5	L2814	L3	R2114	C9	R2825	N8	V2206	P3
C2001	C6	C2217	Q5	C2819	L8	C3004	M5	E2110	U2	L2815	M3	R2115	C9	R2827	N4	V2301	R5
C2002	G3	C2218	Q4	C2820	N6	C3000	B6	E2111	S2	L2816	M2	R2200	P3	R2828	N8	V2400	S4
C2003	C6	C2219	Q5	C2821	L6	C3001	B6	E2120	C6	L2819	K6	R2201	P3	R2829	L2	V2401	S6
C2004	G2	C2220	Q5	C2822	L6	C3000	Q4	E2121	C8	L2820	M2	R2202	Q4	R2830	L3	V2402	Q4
C2005	G2	C2221	Q4	C2823	N5	C3001	Q4	E3461	A5	L2821	L2	R2203	N4	R2831	L2	V2403	O6
C2006	G2	C2222	Q5	C2824	K6	C3002	Q2	E3462	A5	L2822	L2	R2204	P3	R2834	N6	V2406	Q2
C2007	G2	C2223	Q5	C2825	N4	C3003	Q2	<b>F</b>	L2823	K2	R2206	N4	R2835	L5	V2421	H5	
C2008	G3	C2224	P6	C2826	N4	C6001	E3	F2000	B5	L2824	K2	R2209	P5	R2840	N8	V2800	N8
C2009	G3	C2225	P3	C2827	N5	C6002	D3	F3300	B6	L2825	N2	R2211	N5	R2852	L5	V3300	B6
C2010	G4	C2229	Q4	C2828	N5	C6003	D3	<b>G</b>	L2826	N2	R2213	O6	R2853	M3	V6051	F4	
C2011	H2	C2230	N5	C2829	N5	C6004	E3	G2301	F7	L2827	R5	R2217	P4	R2854	N3	V6053	E2
C2012	G2	C2233	Q3	C2830	N5	C6005	E3	<b>J</b>	L2828	R5	R2218	P3	R2855	N4	<b>X</b>		
C2013	G3	C2234	O5	C2831	N8	C6006	D3	J2070	S3	L6001	E4	R2219	P4	R2856	N4	X1400	E5
C2014	G3	C2235	P4	C2832	M5	C6007	E3	J2072	S3	L6002	E3	R2220	N3	R2857	N2	X1401	C4
C2015	G3	C2250	N3	C2834	N7	C6008	E3	J2073	S4	L6051	E2	R2221	N3	R2863	N8	X1402	D4
C2016	F3	C2251	N3	C2835	N4	C6011	D3	<b>L</b>	L6052	F4	R2222	N4	R2864	N5	X2001	B2	
C2017	G3	C2300	O9	C2837	K6	C6012	E3	L1400	G4	L6053	D1	R2223	Q4	R2865	N4	X2061	Q9
C2018	G3	C2301	I5	C2839	N6	C6032	E3	L1410	H5	L6057	E2	R2302	R9	R2866	N3	X2400	A2
C2019	C5	C2303	H8	C2841	L3	C6051	F4	L1411	F4	L6058	E2	R2303	H2	R2881	M2	X2700	I3
C2026	F3	C2304	H8	C2842	L3	C6052	F3	L2000	F4	L6059	D1	R2304	S4	R2882	M2	X3300	A7
C2027	H2	C2305	J3	C2845	M3	C6053	F4	L2001	F3	L6090	F3	R2305	S5	R3300	B6	X3460	A5
C2030	G2	C2306	J3	C2847	M2	C6056	E2	L2002	G3	L6091	E2	R2309	P9	R3301	B6	X3500	R3
C2070	Q3	C2307	F8	C2850	N2	C6059	D1	L2003	G4	L7510	O7	R2310	P9	R3305	A6	X4800	I8
C2071	R2	C2400	B2	C2851	N7	C6063	F3	L2005	N2	<b>M</b>	R2311	G4	R4805	I5	X6001	B1	
C2072	R5	C2401	B3	C2852	N5	C6064	F3	L2012	G2	M2100	R7	R2312	G4	R6000	D4	X7400	S7
C2074	Q2	C2402	O1	C2854	N4	C6090	F3	L2071	R6	<b>N</b>	R2401	B2	R6001	D4	X7402	T8	
C2075	S2	C2403	O2	C2855	N8	C6091	E2	L2100	R1	N1400	G4	R2402	B2	R6002	E4	X7403	T7
C2101	R1	C2404	O2	C2856	K6	C6092	F3	L2102	T2	N2000	G2	R2423	Q2	R6055	F3	X7404	T7
C2103	A7	C2405	B3	C2857	L6	C6093	E2	L2103	T1	N2001	G3	R2424	O3	R6056	F3	<b>Z</b>	
C2104	B7	C2406	B3	C2858	N6	C6094	H4	L2104	B7	N2201	P5	R2425	O2	R6058	F3	Z2000	G3
C2107	Q2	C2407	B2	C2860	N6	C6095	H4	L2200	Q6	N2400	P2	R2426	O2	R6059	D2	Z2301	J5
C2108	Q1	C2408	B2	C2861	N7	C7509	O7	L2201	O6	N2801	L3	R2427	O2	R7500	O7	Z2400	I4
C2110	R5	C2409	Q1	C2865	M8	C7510	O7	L2202	P4	N2802	M2	R2428	O2	R7504	O7	Z2401	B7
C2111	S5	C2412	H5	C2866	L8	C7515	T7	L2400	P2	N6001	E3	R2429	Q2	R7505	T7	Z2402	A7
C2112	S5	C2490	H9	C2867	K6	C7516	Q7	L2401	Q2	N6002	F2	R2439	R9	R7506	P7	Z3300	B6
C2120	C9	C2491	F9	C2868	L7	C7518	Q7	L2402	P2	N7500	P7	R2440	R9	R7507	O8	Z6000	E3
C2121	C9	C2492	F9	C2869	L8	C7519	P7	L2403	R9	<b>R</b>	R2441	R4	R7508	O8	Z7500	Q8	
C2122	C9	C2493	F9	C2870	N5	C7520	P7	L2404	R9	R2000	C6	R2442	R6	R7509	O8	Z7501	P8

